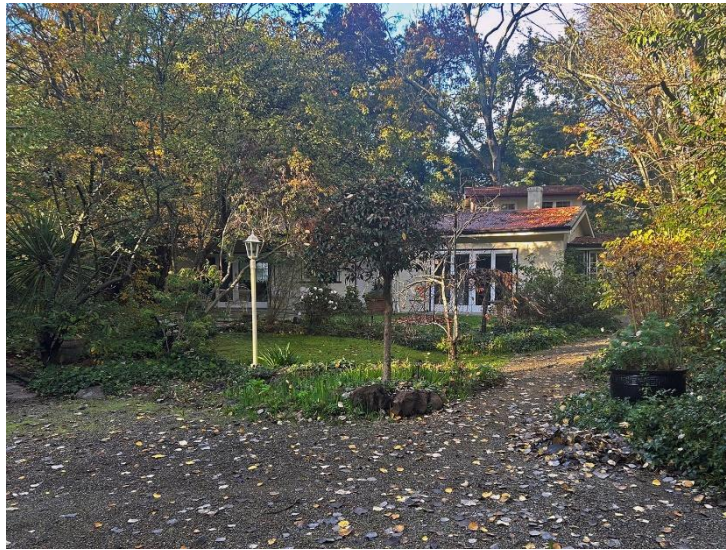


DEVON COTTAGE

Edna Walling signature trees, including hornbeams, hawthorns and silver birches create an enchanting garden with winding paths, bulbs, garden rooms, patios of crazy paving.

- Enchanting
- Edna Walling home and garden



Nestled within the quaint embrace of Sonning lies the timeless allure of Devon Cottage, a haven where nature's whimsical enchantment abides. Step into a verdant garden unfurling since its creation in 1956. Once a humble nursery, this land of 3/4 acre now beckons wanderers with its simple splendour.

As you amble along the winding paths, each twist and turn reveals a new wonder to behold. Lush foliage bathes the senses in a kaleidoscope of greens. Amidst this botanical symphony stands the revered *Parrotia Persica*, a titan of arboreal grace, its branches whispering secrets carried through generations.

Here, time bends and Devon Cottage's garden, a living testament to Edna Walling's vision, invites you to lose yourself in its tales of nature's magic. Rambling pathways meander through lush foliage, guiding visitors on a journey of discovery. Delicate ferns cascade over moss-covered rocks, while tall trees umbrella above. It is not only a residence but a sanctuary - a place where the boundary between indoors and out blurs seamlessly. Its sun-dappled courtyard invites quiet contemplation, while shaded alcoves offer respite from the midday heat.

GARDEN NOTES

Devon Cottage is located on the lands of the Wurundjeri People. Open Gardens Victoria wishes to acknowledge the Traditional custodians of this land and we pay respect to their Elders, past, present and emerging.

These notes can be downloaded from the Open Gardens Victoria website:

www.opengardensvictoria.org.au

